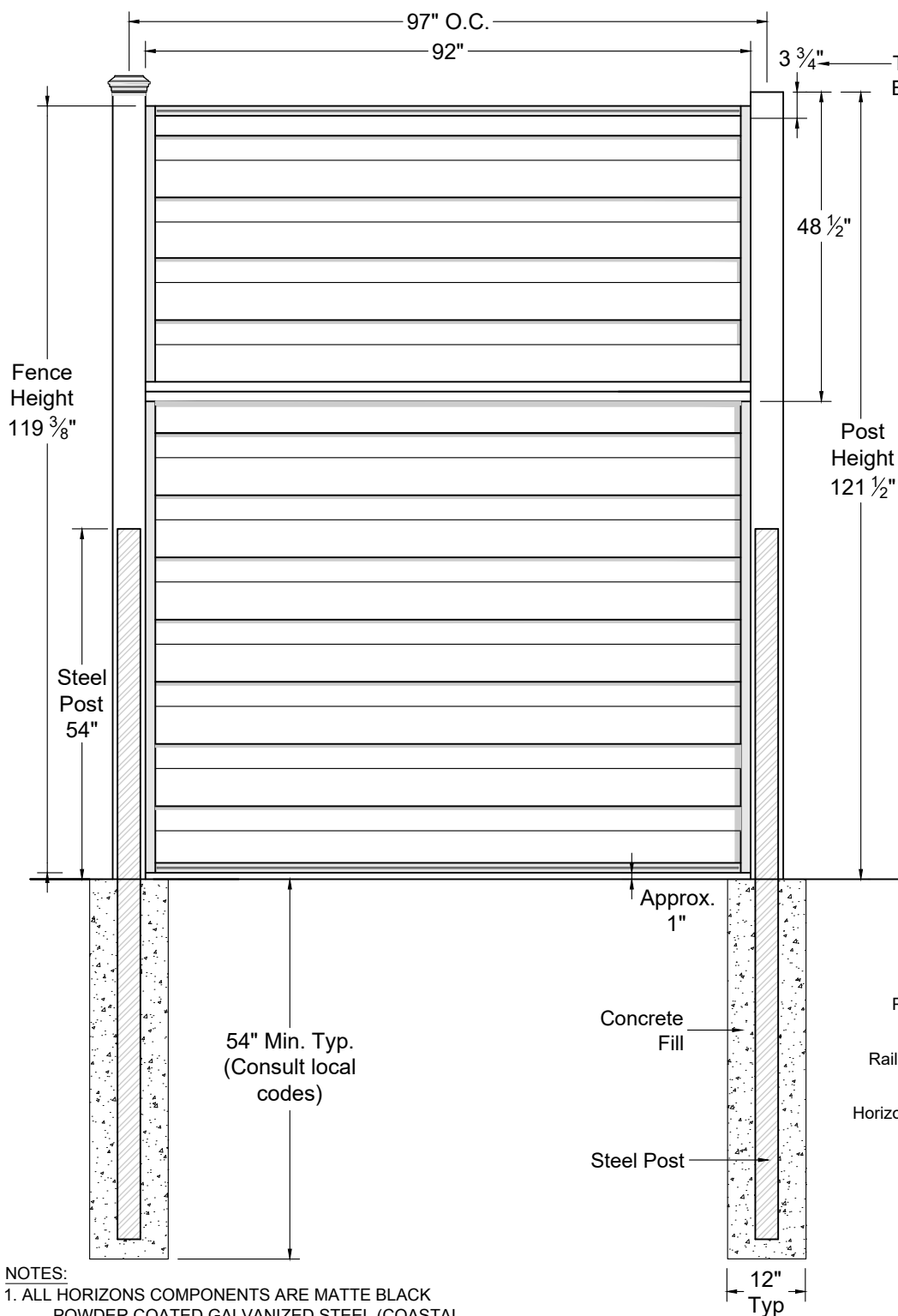


# Trex® w/ Horizons

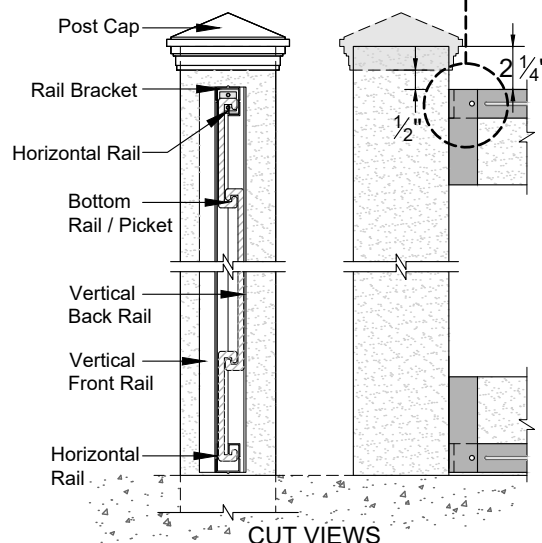
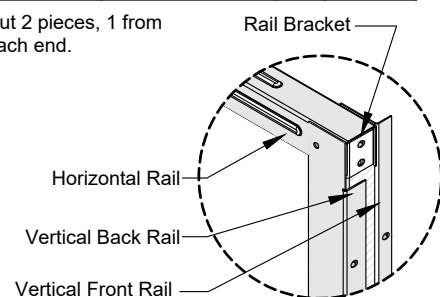
## HORIZONTAL FENCE SYSTEM

**Fence Height: 10'**



| COMPONENT                   |                            | QTY. | LENGTH  |
|-----------------------------|----------------------------|------|---------|
| Post Cap                    | Pyramid Flat Crown         | 1    | N/A     |
| Post                        | 5" x 5"                    | 1    | 144"    |
| Galv. Steel Post            | 3.5"x3.5"                  | 1    | 108"    |
| Horizontal Rail             | 1 1/2" x 1 1/4" (Horizons) | 4    | 92"     |
| Bottom Rail / Picket        | 1" x 5 3/4"                | 24   | 92"     |
| Vertical Back Rail          | 3/4"x1 1/2" (Horizons)     | 2    | 73 1/2" |
| (2 - 45")                   |                            | 1    | 93"     |
| Vertical Front Rail         | 5/8"x1 1/2" (Horizons)     | 2    | 73 1/2" |
| (2 - 45")                   |                            | 1    | 93"     |
| Horizontal Top Rail Bracket | 1 1/4"x1" (Horizons)       | 4    | 1"      |
| Pan-Head Screws             | #10                        | 90   | 3/4"    |

\*Cut 2 pieces, 1 from each end.



### NOTES:

1. ALL HORIZONS COMPONENTS ARE MATTE BLACK POWDER COATED GALVANIZED STEEL (COASTAL APPLICATIONS MUST USE STAINLESS STEEL).
2. INSTALLATION TO BE COMPLETED PER MANUFACTURER'S SPECIFICATION.
3. REFER TO [TrexFencingSRF.com](http://TrexFencingSRF.com) FOR CONSTRUCTION DETAILS AND PRODUCT INFORMATION.
4. DRAWING NOT TO SCALE.

**Trex® Fencing**  
COMPOSITE FENCE SYSTEMS

SRF Fence & Supply Co.  
**Trex®**  
Fence Distribution

Trex®, the Trex® logo, and Trex Seclusions® are either federally registered trademarks, trademarks or trade dress of Trex Company, Inc., Winchester, Virginia or its licensees.

[www.trexfencingsrf.com](http://www.trexfencingsrf.com)  
855.620.TREX  
SRF Fence & Supply Co.  
1745 Shea Center Dr., Ste. 370  
Highlands Ranch, CO 80129